

Motion Control and I/O Product Portfolio

Controlled solutions via:



EtherNet/IP



IO-Link



Servo drive **CMMT-AS & -ST**



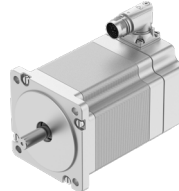
Range 300W – 12kW
24 VDC-480 VAC

IP65 Servo motor **EMMT-AS**



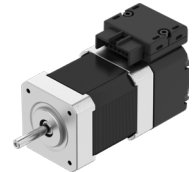
120 – 480 VAC
60-190 mm frame sizes

IP65 Stepper motor **EMMT-ST**



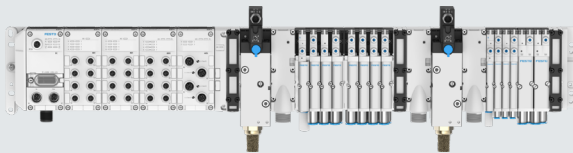
24-48 VDC
absolute encoder
NEMA 17, 23, and 34

IP40 Stepper motor **EMMB-ST**



24-48 VDC
absolute encoder
NEMA 17, 23, and 34

IP67 I/O & valve terminal **CPX-AP-A**



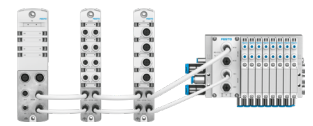
Centralized I/O and valve terminal
Daisy-chain to additional I/O and devices

IP20 I/O **CPX-E**



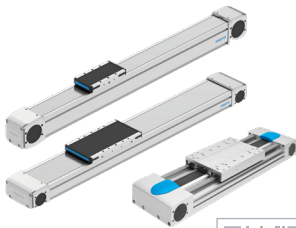
Remote I/O
Optional addition of motion controller

IP67 I/O **CPX-AP-I**



Decentralized I/O
Daisy-chain to valve terminal

Toothed belt actuators **ELGD & EGC**



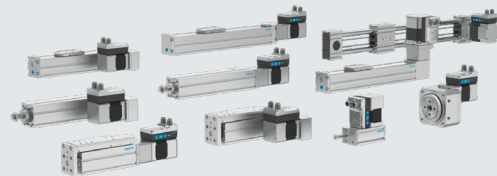
Up to 8.5 m long
Narrow and wide model frames

Ball screw actuators **ELGD & EGC**



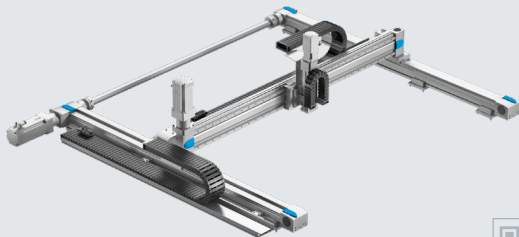
Up to 3,000 N force
Narrow and wide model frames

Simplified Motion Series portfolio



Simple end-to-end positioning and press via I/O
I/O Link control for multi-positioning

Handling Guide Online portfolio



1, 2 and 3-D gantries fully assembled or shipped in kits
Includes cable management and all accessories

IP40 rod style actuator **EPCC**



500 mm max stroke
Up to 1 kN max thrust

IP65 rod style actuator **ESBF**



1,500 mm max stroke
Up to 17 kN max thrust

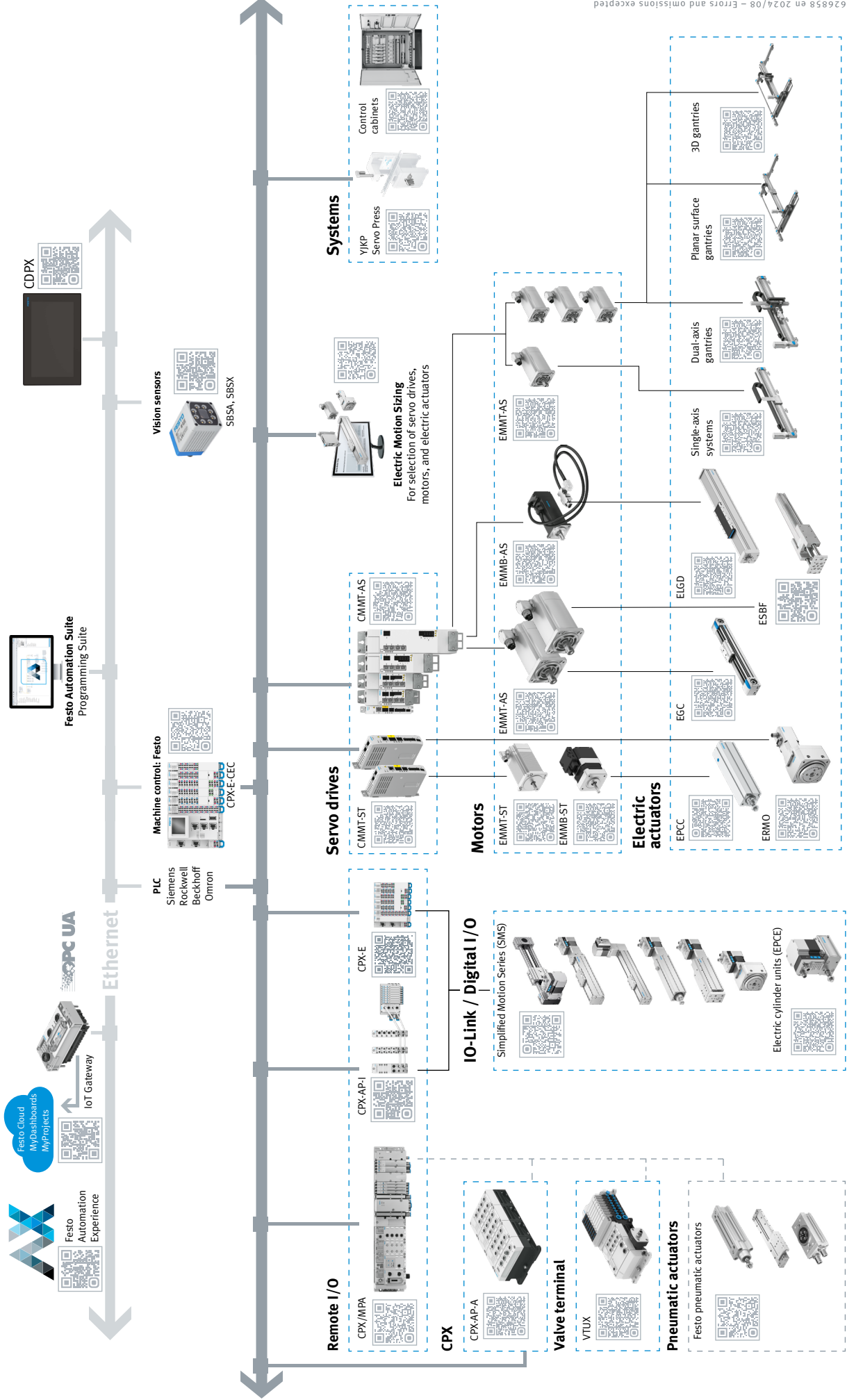


*Size all actuators, motors and drives via [Electric Motion Sizing](#):



Festo Automation Platform

Controlled solutions via:



Remote I/O

CPX/MPA

CPX-AP-A

Valve terminal

VTUX

Pneumatic actuators

Festo pneumatic actuators

Servo drives

CMMT-ST

CMMT-AS

Motors

EMMT-ST

EMMB-ST

EMMT-AS

Electric actuators

EPCC

ERM0

EGC

ESD

ELGD

ESBF

Systems

YJKP Servo Press

Control cabinets

Festo Automation Suite Programming Suite



CDPX



Vision sensors

SBSA, SBSX



Machine control: Festo

CPX-E-CEC



PLC

Siemens

Rockwell

Beckhoff

Omron

Electric Motion Sizing
For selection of servo drives, motors, and electric actuators

IO-Link / Digital I/O

Simplified Motion Series (SMS)

Electric cylinder units (EPCE)